

RAYON & COTTON SCARVES & SHAWLS

LIGHT RAYON GATHERED SCARF

Very pretty asymmetric diagonally ended scarf or shawl with elastic stitching that runs the length of the scarf to gather it all up.

Just tie it on & get an instant French couture look! Great for scrunch dyeing or ice dyeing! Historical costumers?

53" long after shrink & 15" wide.



#BR417

HANDWOVEN PLAIN TWILL RAYON CHALLIS SCARF

Handwoven 100% Rayon Challis scarves & shawls are like a wool challis but much softer! Plain slightly twill weave. Hand twisted fringe.

76" long & 26" wide



#ISR143

RAYON JERSEY INFINITY SCARF

Made from luxurious liquid draping 100% Rayon Jersey. Edge seams are rolled & stitched.

Continous circle with NO seam join at the neck! Sewn with cotton thread.

69" all the way around & 19" wide



#BRJ416

BAMBOO RAYON BLEND SCARVES

These 100% bamboo rayon scarves are soft as heavily buttered silk covered in down feathers from a baby goose! Luscious, gorgeous 100% Bamboo Rayon scarves with hand rolled hems at Dharma-tastic prices.

#BRS8 8" x 54"
#BRS11 11" x 60"
#BRS14 14" x 72"



RAYON SCARF FLOATING SQUARES DESIGN

Handwoven 100% Rayon Challis scarves & shawls are like a wool challis but much softer! Sort of a floating weave squares design. Super soft! Hand twisted fringe.

74" long & 27" wide.



#ISR255

RAYON RUANA SCARF OR SHAWL

Drape & wear it in lots of ways. Overcast serged pearl edges. Great over a dress on

summer nights or gathered around your neck during chilly weather. 100% woven Rayon. Sewn with cotton thread. One size: Approx. 59" length by 41" wide.



#BR463

LIGHT RAYON SPIRAL SCARF

Wear it as a scarf or shawl! Shaped like a giant croissant! Totally flat - so it's easy to dye. Put it on & it spirals & waterfalls all on its own. Looks complicated - but it's not! Great for dancers, too!

8 ft. long after shrink & 17" wide at widest point.



DHARMA BALI RAYON LIGHT



#BR420

RAYON SCARVES, SASHES & SARONGS

Hemmed on 4 edges (except fringed) with cotton thread to avoid "saddle stitched" effect when dyed. Like all our rayon, takes dyes exceptionally well.

Sash: 6"x 72": #BR17
Scarves: 11"x60": #BR18
44"x 44": #BR20
Sarong: 44"x 72": #RSAR
Fringed Sarong: 44"x 72": #RSARF



SILK & COTTON SARONGS PGS. 67 & 72

RAYON & COTTON SCARVES & SHAWLS

CIRCLE SCARF IN LIGHT JERSEY



Popular Circle Scarf in 100% cotton Dharma Light Jersey fabric, sewn with cotton thread. Matches our Light Jersey Lotus Skirt, Extended Sleeve Top & Twisted Tees & makes a great accent. Light enough to wear most of the year. Wear them in many different ways!

#CSLJ

RAYON TWISTED FRINGE SCARVES & SHAWLS



100% soft drapery Rayon scarves & shawls. All machine hemmed with cotton thread, & now with twisted fringes. Tie dye, scrunch dye, shibori, image transfer them, or paint them!

13"x 60": #BR339

20"x70": #BR322

LIGHT RAYON SCARVES & SARONGS

Light floaty scarves! Feathery soft, made of our popular Bali Rayon LIGHT fabric, these dye up like a dream! Sewn with 100% cotton thread, with single needle turned hems & twisted fringes.



#BR373: 13.75" x 60":

#BR392: 21" x 72":

#BR402: 44" x 72":



LIGHT RAYON CIRCULAR SCARF



Made from wonderfully soft, breezy 100% Rayon Light. Edge seams are rolled & stitched. French join seam for ravel resistance. Sewn with cotton thread. See it dyed & styled - lots of color photos on our website!

77" all the way around & 21.5" wide

#BR406

BLACK RAYON SCARF



Hand twisted fringe. Hemmed sides, hand fringed ends. Paint them with opaque or metallic paints, Jones Tones foils, Hotfix rhinestones & Swarovski Crystals! Should be dischargeable could go tan, brown, rust or very dark rust, to barely reacting at all. When planning to discharge, test first.

13.5" wide x 60"



#BR339B

CIRCULAR SCARF

BABY RIB KNIT

Look good & keep warm at the same time with this great new unisex circular scarf. Made from soft 100% cotton Baby Rib Knit & serged with cotton thread. Tie-dye, batik, shibori or dye it all one shade. Make it yours, make it unique! Wear it in a number of different ways - see our website for photos. 68" around x 10" wide.



#CH080

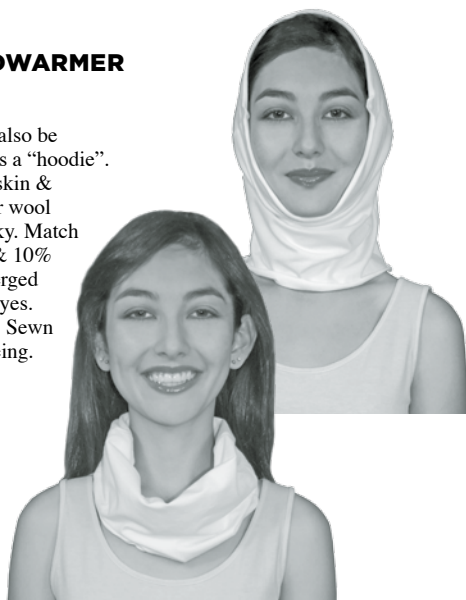
NEW!

NECKWARMER / HEADWARMER COTTON LYCRA

Tubular shaped neckwarmer can also be pulled up over the head to wear as a "hoodie". Cotton/Lycra blend is soft on the skin & great for folks who find acrylic or wool neckwarmers too scratchy or bulky. Match your tie-dyed tops! 90% Cotton & 10% Spandex dyes quite well. Pearl serged edges. Dye with Fiber Reactive dyes. Paint them with our fabric paints. Sewn with cotton thread for perfect dyeing. 11" wide by 14" long.



#BCL357



HANDWOVEN RAYON CHALLIS SCARVES & SHAWLS



Handwoven 100% Rayon Challis scarves & shawls are like a wool challis but much softer! If you get irritated wearing wool next to your skin, then this is the scarf or shawl you will love! Give them a try, you'll not be disappointed. Made for us in Bali. Sewn with cotton thread. Twisted fringe.

15"x 60":

#BR341

22"x 72":

#BR338

36"x 80":

#BR342

**ECONOMICAL FOR LARGE GROUP PROJECTS!
22" X 22" COTTON BANDANAS**

You would not believe how hard it is to find dyeable 100% cotton bandanas sewn with cotton thread. No one makes them. So we're having them made for us overseas. Hemmed edges on all four sides, but not always perfectly square. Sewn with cotton thread. Ready to dye, marble, print or paint. **Sold in packages of 12.**

#CBSET



**NATURAL, UNBLEACHED, HEAVIER WEIGHT
22" X 22" COTTON BANDANAS**

In our never ending quest to provide what you need, these are 100% unbleached cotton, Serged edges, but NOT with cotton thread. **Sold in packages of 12.**

PACKS OF 12

#NCBSET

**DISH TOWELS
FLOUR SACK TOWELS**

Super low prices. Sizes to fit various needs. Hemmed with cotton thread. Textured finish.

PACKS OF 12 = ONE ITEM FOR DISCOUNTS

- #FST17** 17" x 38"
- #FST24** 24" x 38"
- #FST30** 30" x 34"



**22" X 22" X 29"
TRIANGLE COTTON BANDANAS**

Bleached, hemmed with cotton thread on 3 sides. Like our regular bandanas but cut in half & hemmed. Sold in packs of 12.

PACKS OF 12

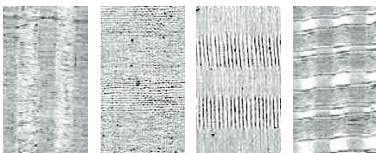
#TBSET



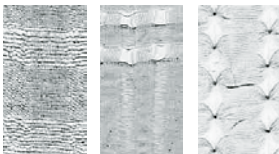
HANDWOVEN COTTON SCARVES & SHAWLS

Made in Indonesia. Intricate openwork patterns. 7 patterns, each in 3 sizes, each with fringe. Completely handmade - charm is in the irregularities. Sizes are approximate. NOTE: Can shrink up to 10% in length.

**ALL 7 STYLES COME IN EACH OF THE 3 SIZES.
PATTERNS ARE SHOWN ON OUR WEBSITE.**



JCS1 JCS2 JCS4 JCS6



JCS7 JCS8 JCS11



Stock # are: **#JCS** + style + size.
Style 6 weave design in a 14" x 72" size scarf would be:
#JCS614.



- 11" x 60" **#JCS_11**
- 14" x 72" **#JCS_14**
- 37" x 80" **#JCS_37**

**COTTON SCARVES, SHAWLS,
SARONGS, BANDANAS,
TOWELS & GOODS**

COTTON SCARVES & SARONGS

100% lightweight cotton. Tightly hemmed all around with cotton thread. Dye brilliantly & are good for hand painting (as an alternative to silk). Light as a feather, less transparent when dyed, there are dozens of ways to use & wear them. Sarongs are particularly nice as beach cover-ups, as tablecloths or as wall coverings. Tie-dye or dye in solid colors to match your tops.



- SCARVES:**
- 15"x60" **#CS15**
- 27"x27" **#CS27**
- 36"x36" **#CS36**
- 42"x45" **#CS42**
- SARONG:**
- 44"x72" **#SAR**

MIX THESE WITH COTTON CLOTHES FOR THE BEST DISCOUNT!
**SIZES ARE APPROXIMATE! GIVE OR TAKE AN INCH OR SO.
THEY SOMETIMES VARY FROM SHIPMENT TO SHIPMENT.**

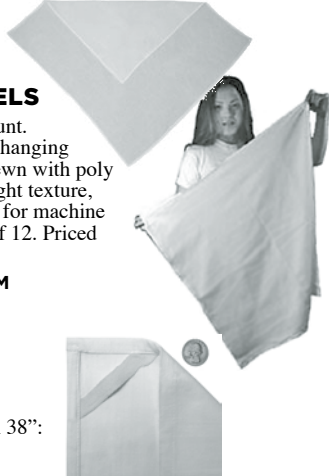
**TEA TOWELS
DISH TOWELS
GOLF TOWELS
FLOUR SACK TOWELS**

100% cotton, 130 thread count. Hemmed all around, have a hanging loop on one corner, & are sewn with poly thread. Fabric has a very slight texture, so would have good "tooth" for machine embroidery. Sold in packs of 12. Priced per pack of 12 towels.

PACKS OF 12 = ONE ITEM FOR DISCOUNTS

#TEAT
28" X 28":

New size! A generous 33" x 38":



NEW! COTTON EYEGLASS CASE

Make a tie-dye eyeglass case for your bedside table! Dye in bright colors so you can spot your reading glasses from across a room! 100% woven Cotton Prima. 3.75" width x 7.75" length. One 2.5" side opening. Enclosed light foam padding inside. Also nice for stashing any jewelry when you have to take it off for yoga class. Sewn with Cotton thread. Hand wash, line dry.

#BC241



COTTON FANS: 8" / 9" / 10"

Cotton & rattan fans. Can be painted, stamped, & drawn on with fabric markers. Great for school plays, camp projects & birthday party favors!

- #BC162** 8"
- #BC143** 9"
- #BC160** 10"



17" X 17" COTTON HANKIES

100% bleached cotton. Hemmed with cotton thread. They can be dyed, screen printed or marbled. Sold in packages of 12.

PACKS OF 12

#CHSET

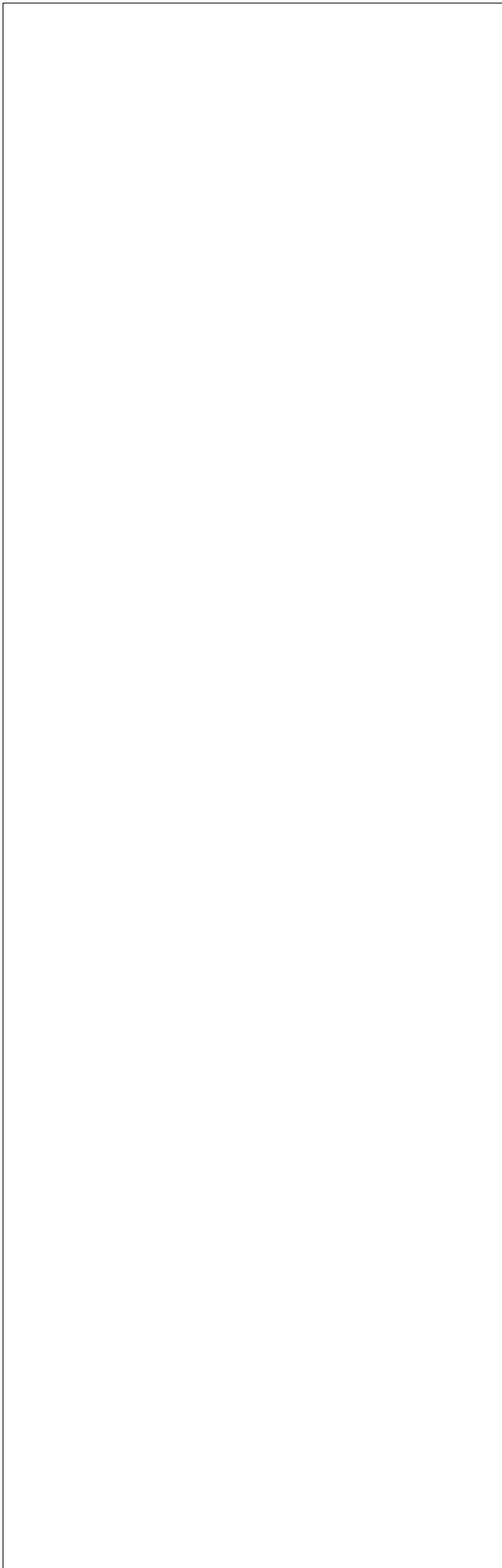


UTILITY TOWEL - 11"X17" (PACK OF 12)

100% cotton towels. Make rally flags for your favorite sports team, golf towels, or yoga towels. Sold in packs of 12. Prices per pack of 12. Each pack counts as one item for discounts.

#UTSET





SILK DANCING VEILS

■ SILK VEILS 5 MM HABOTAI (PAJ) DANCING VEILS

Hand rolled hems hand sewn with silk thread. Dye & paint them, spin, twirl & float like a butterfly. You don't have to technically be a dancer to enjoy & have fun with our dancing veils. These 5 mm veils are ethereal, transparent & also fragile. Handle with more care. Handwashing recommended.

#HV5

5 MM

35" x 84"
 35" x 108"
 45" x 108"
 45" x 144"
 55" x 108"
 45" x 104" Semi circle



#HV5

HAND WASH
 LINE DRY

■ SILK VEILS 8MM HABOTAI (PAJ) DANCING VEILS

Beautiful habotai silk veils perfect for dancing. These 8mm veils are slightly heavier weight than our 5mm silk veils. All are made with rolled hems hand sewn with silk thread for even dyeing. Dye & paint them, spin & twirl them! Wrap the large ones around your body! Stronger than the 5 mm veils; 8mm is not as transparent as 5mm.

- DANCERS
- THEATER GROUPS
- PLAYTIME

8 MM

#HV8

35" x 84"
 35" x 108"
 45" x 108"
 45" x 104" Semi circle



#HV8

FLAT CREPE DE CHINE SCARVES & SHAWLS WITH SILK FRINGE

Flat Crepe de Chine with absolutely beautiful 100% silk fringe. Drapes beautifully & is an excellent surface for painting. Hand sewn with silk thread in China. The fringe is difficult to make, hard to get & not cheap. All sizes are 8mm. Very elegant!

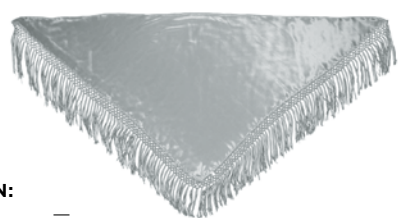
THESE SIZES HAVE STRAIGHT FRINGE:

8" x 54" #SFS8
 11" x 60" #SFS11
 14" x 72" #SFS14



THESE SIZES HAVE FRINGE THAT STARTS WITH A CROSS NETTING DESIGN:

35" x 35" Square #SFS35
 44" x 44" Square #SFS44
 44" x 44" x 62" Triangle #SFTS



TRIANGULAR SHAWL GREAT FOR DANCERS TO WEAR ON THE HIPS!

■ 100% WOOL GAUZE SCARVES

Loosely woven like a gauze fabric. Sides are closed selvage & scarf ends are unfinished. Super soft (for wool) & look amazing! Perfect for dyeing & felting. Perfect as a base for nuno or needle felting. Dye perfectly with Dharma Acid Dyes. Scarves not the right size? No problem! We have 100% wool fabric yardage (pg. 64).

11" X 60":



#PWS

14" X 72":

HAND WASHING
 RECOMMENDED
 FOR THESE
 PUPPIES!

22" X 90":

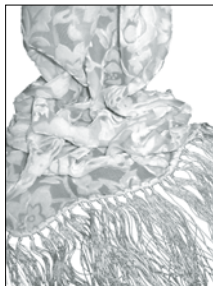
SILK SARONGS

Measure 44" by 72" (about 4ft x 6ft) or 36"x 60". Made in China. Hand rolled hems sewn with silk thread.

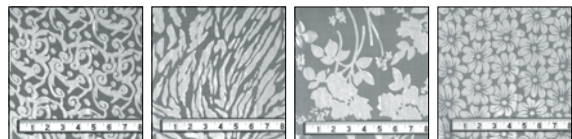
Habotai 10mm 44"x72" #SSARH
 Habotai 10mm 36"x60" #SSARH36
 Chiffon 8mm 43"x72" #SSARC
 Stonewsh CdC 16.5mm 42"x72" #SSARSW

SILK CUT VELVET SCARVES WITH 4" RAYON FRINGE

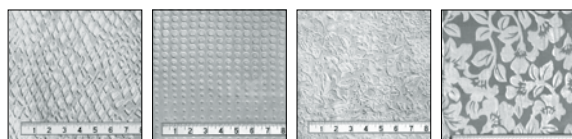
They're all the rage now! You can see them in high end stores for \$60-\$90. For us it's just another beautiful scarf & we can sell them as inexpensively as all our scarves. Silk cut velvet has a rayon pile on a silk background. It's 18% silk & 82% rayon. The rayon pile is in patterns & there is a rayon fringe on some of the styles. The big thing here is that just dyeing them a solid color with either silk or cotton dyes, yields a fabulous result. The rayon & silk dye in different shades on the same scarf - fun!



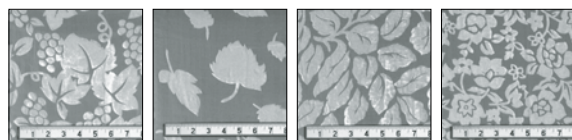
USE WITH ALTER EGO DYES FOR ABSOLUTE FABULOSITY! SEE PAGE 44.



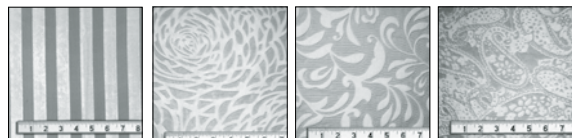
ABSTRACT ANIMAL BOUQUET DAISY



DIAMONDS DOTS FLORA FLOWER



GRAPES LEAF-2 LEAF ROSE



STRIPE PEONY BAROQUE PAISLEY

9" X 54" + 4" FRINGE (Available in all patterns shown above)

#SCVS9

14" X 72" + 4" FRINGE (Available in all patterns shown above)

#SCVS14

22" X 72" + 4" FRINGE (Available: Abstract, Bouquet, Animal)

#SCVS22

SOLID SILK VELVET SCARVES WITH RAYON FRINGE

3 SIZES: 9" X 54", 11" X 60", 14" X 72" WITH A 4" FRINGE OR WITHOUT FRINGE

Beautiful solid UNCUT silk/rayon velvet with rayon fringe. Dyes beautifully as it is or create your own outwork designs using the **DEVORE' TECHNIQUE**. Just draw on your design with Fiber Etch (page 13), dissolve the fibers that are rayon, then wash away the rayon pile. Dye your creation in your choice of gorgeous colors that you won't ever find in ready to wear retail stores!



WITH FRINGE 11" x 60": **#VSF11**
14" x 72": **#VSF14**

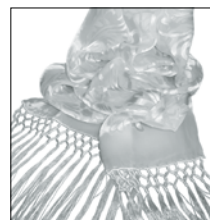
NO FRINGE 9" x 54": **#VS9**
11" x 60": **#VS11**
14" x 72": **#VS14**



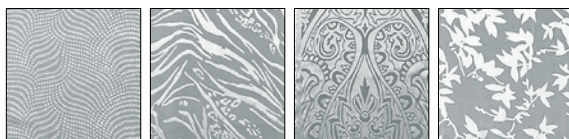
DEVORE' SATIN SCARVES

DEVORE' SCARVES: RAYON SATIN ON SILK CHIFFON BACKING

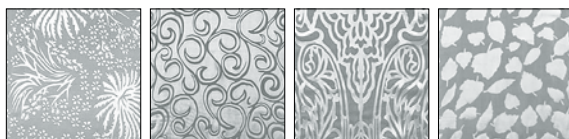
Deliciously beautiful scarves! Shimmer of rayon satin forming an array of leaves, flowers, soft stripes or ripples on a sheer background of silk chiffon. Available in 12 different patterns, 3 with 10" long spectacular knotted rayon fringe. Dye up with beautifully intense colors. Try spray dyeing or Alter Ego dyes (pg. 44)! See our website for devore' projects & tips. Specify pattern & size as below.



ANIMAL STRIPES ART NOUVEAU BAMBOO INTRICATE FLORAL



POLKA DOTS UNDERWATER ARABESQUE BRANCHES



CHRYSANTHEMUMS CURLS DECO LEAF

ALL PATTERNS AVAILABLE WITHOUT FRINGED ENDS:

15" x 60" **#DCS15**
14" x 72" **#DCS14**
8" x 54" **#DCS8**
35" x 35" **#DCS35**

10" FRINGED ENDS AVAILABLE IN PATTERNS: UNDERWATER, ART NOUVEAU, & BAMBOO ONLY. WITH FRINGED ENDS:

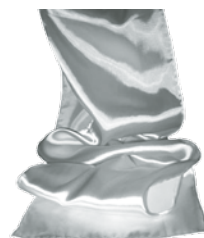
15" x 60" **#DCS15F**
14" x 72" **#DCS14F**
22" x 72" **#DCS22F**



DEVORE SOLID SATIN SCARVES (70% RAYON / 30% SILK CHIFFON)

Shimmer of rayon satin! Used for the *Devore'* technique. Silky, shiny beautiful fabric for "burn-out". Apply Fiber-Etch to remove the rayon threads in a design leaving a lace of the remaining silk threads. Dyes up gorgeously in any color! You can solid color dye or paint these with Procion dye. They emerge with startlingly intense colors!

8" x 54" Solid (no pattern, no fringe): **#DCS8**
15" x 60" Solid (no pattern, no fringe): **#DCS15**
14" x 72" Solid (no pattern, no fringe): **#DCS14**
35" x 35" Solid (no pattern, no fringe): **#DCS35**



SILK DYEABLE BLANKS

SILK COIN PURSE SILK COSMETIC BAG SILK CLUTCH BAG

**SOLID SILK VELVET
OR
CUT SILK VELVET**

**3 SIZES: 3.5"x 5.25"
5.5" x 8"
7.25" x 10.5"**

Zippered closure bags fully lined in quilted Habetai. Ready to dye. Get duo tone effects by dyeing the cut Velvet abstract design bags with Alter Ego dyes. Solid Velvet bags look great dyed one color or mottled in multiple colors with Procion dye. Add dyed silk rolled cord (**#SBS**) to make a shoulder strap!



Solid or Cut Velvet: **S**
Solid or Cut Velvet: **M**
Solid or Cut Velvet: **L**

SOLID SILK VELVET



Solid: **#SVBAG**

CUT SILK VELVET WITH
ABSTRACT DESIGN



Cut: **#CVBAG**
Samples shown dyed.

MEN'S SILK NECKTIES LUXURIOUS!

**PAINTS, RATHER
THAN DYES WORK
BEST WITH TIES.**

Beautifully made in China & sewn with 100% silk thread. Made extra long with a synthetic insert which is an advantage for painting. Better to dryclean rather than wash silk ties, so they don't lose their shape. For this reason, artists often choose to work on these with paints, like Dy-na-flow or Setasilk instead of dyes. Paint, dry, iron, & you're done! If you choose to use dyes, it must be HAND washed. Then blot carefully until totally dry. Never machine wash or machine dry!



19.5MM CHARMEUSE : SATIN FINISH
White 2"x60" **#STC2**
White 3"x60" **#STC3**

White 4"x60" **#STC4**
Black 4"x60" **#STC4B**

10 MM HABOTAI: "CHINA SILK"
White 4"x60" **#STH4**
Black 4"x60" **#STH4B**

SILK COSMETIC BAGS / 10MM HABOTAI SOLID HABOTAI

Made from 100% silk Habetai, sewn with silk thread, with a zipper along one long edge. About 5" x 9". Great as a small handbag, cosmetic case, carrying case for big sunglasses, or as a jewelry bag.



Plain Habetai: **#SCB**

SILK CHARMEUSE SHOULDER BAG

Beautifully made 12.5 mm Charmeuse bag, fully lined in silk Habetai, with a detailed stand-out designed ball and loop closure. 41" silk self fabric strap. Paint, dye, photo-transfer and make it your own.

4.5"x 6.25"



#SCSB

SILK FAN

Made in China of silk & bamboo. Silk is ready to be painted using any kind of paints, inks, markers or pens. Bamboo frame is "lace cutout" on spines. 8.25" closed length. Fan yourself off in your booth on a hot day!



#FAN

SILK EYEGLASS CASE: HABOTAI OR JACQUARD OR SILK VELVET

3 CHOICES

Useful & easy project to decorate. Use any of our fabric paints, dyes or marking pens.

HABOTAI **#SEYE**
JACQUARD **#SEYEJ**
VELVET **#SEYEV**



SILK GIFT BAGS SILK LAVENDER BAGS SILK WINE BAGS

8MM HABOTAI SILK OR
5MM ORGANZA SILK

Little silk bags with a silk tie closure. Dye or decorate them with our dyes or markers! Use as silk gift bags, to hold mementos, hold potpourri, as jewelry pouches. Large size fits wine bottles. Prices are for both fabrics:

2"x 3" **#SGBAG3**
3"x 4" **#SGBAG4**
4.5"x 6" **#SGBAG6**
5"x 7" **#SGBAG7**
6.5"x 11" **#SGBAG11**
6.5"x 15" **#SGBAG15**



for wine bottles

Above stock numbers are for Habetai.

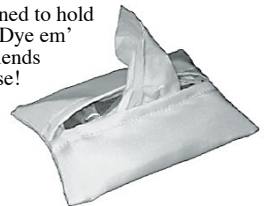
To order Organza, use stock numbers: **OBAG3, OBAG4, etc.**

SILK TISSUE HOLDER

Made in 10mm Habetai Silk. Designed to hold little plastic travel packs of tissues. Dye em' up - give as gifts or impress your friends when you pull tissue from your purse!

3.5"x 5.5"

#STP



DISPLAY YOUR
GORGEOUS
PAINTED SILK
SCARVES, COOLEST
TIE-DYE MANDALAS,
OR YOUR KID'S BEST
FINGER PAINTED
BANNER ON A
CLASSY CARVED
TAPESTRY HANGER!

WOODEN TAPESTRY HANGERS

Beautiful handmade hangers worthy of displaying your best hanging artwork at good prices. Carved by a Balinese craftsman in a local sustainable golden wood. Many styles. 2 colors. Also in bamboo. In 3 sizes: 15", 22" & 30" wide (measured between bottom knobs). Sizes fit many of our most popular pre-hemmed silk, rayon & scarf sizes.



SILK PILLOWS

SILK CHARMEUSE BED PILLOW COVERS

**LUXURIOUS,
SOFT,
LIKE SATIN!**

We don't understand why these are so expensive elsewhere. Ours are made from the best 16.5mm Charmeuse silk, patterned on a standard pillow case & sewn with silk thread.



**21" x
32" overall
including a
3.5" hem**

#CBPC

SILK THROW PILLOW COVERS

FOR PAINTING OR DYEING

**4 SIZES: 14" X 14"- 16" X 16"- 18" X 18"- 24" X 24"
OPEN OR CLOSED SEAMS**

For tie-dye, order them all sewn up. For silk painting, order them with open side seams for easy stretching & painting. In either case, the zipper is already sewn in place. 100% 10mm Habotai silk & sewn with silk thread. They take a standard pillow insert you can buy at fabric stores. Your imagination & the number of sofas in your own & friends' houses are the only limits.



14" #STPC14C OR #STPC14O
16" #STPC16C OR #STPC16O
18" #STPC18C OR #STPC18O
24" #STPC24C OR #STPC24O

SILK DO-DADS FOR PAINTING & DYEING



A REALLY GREAT IDEA!

SILK FOLDING SUN HATS!



Take it out of it's pouch & "Pop", it springs open into a 24.5" sun hat. Then with a simple twist it becomes a 6 inch disk that goes back into a matching pouch. The bag & hat are 8mm Silk Habotai & can be dyed or painted. Careful, though, as the inside rim is metal & will rust if wet for too long. Use silk paints like Dy-na-flow or Setasilk & heatset. Or use a dye like Jaquard or Tinfix painted on rather than submersing. Made in China. White only. Imagine the possibilities! For promotions, vacations, keep one in your purse, leave one in the car! Give-a-ways at weddings! Sell them at outdoor concerts, sports events, beaches, wherever there's sun!



#SFSH

COTTON VERSION IS ON PAGE 132!

SILK SARONGS

Measure 42" x 72" or 36" x 60".
Made in China. Hand rolled hems sewn with silk thread.



Habotai 10mm: 42"x72" :

#SSARH

Habotai 10mm: 36"x60" :

#SSARH36

Chiffon 8mm: 42"x72" :

#SSARC

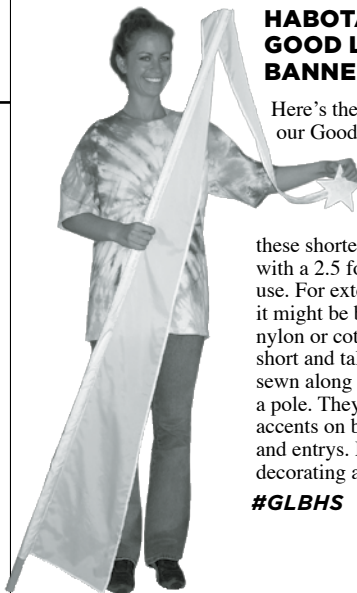
Stonewash CdC: 42"x72"

#SSARSW

HABOTAI SILK GOOD LUCK BANNERS

Here's the Silk version of our Good Luck Banners that we've been asked for. 8mm Habotai and ready to paint. We made these shorter - about 6 foot with a 2.5 foot tail for indoor use. For extended outdoor use it might be better to use the nylon or cotton which come in short and tall. They have a slot sewn along the edge to receive a pole. They make colorful accents on booths, in hallways and entries. Many uses when decorating a home or business.

#GLBHS



■ DEVORE´ SATIN 19MM / 30% SILK, 70% RAYON FABRIC YARDAGE 45" WIDE

Silky, shiny beautiful fabric for "burn-out". Apply Fiber-Etch to remove the rayon threads in a design leaving a lace of the remaining silk threads. Priced per yard.

#DSAT45

■ SILK VELVET 45" WIDE (ALSO KNOWN AS RAYON SILK VELVET)

Fantastic! Luxurious! Standard 18% silk, 82% rayon. Dyes up gorgeously in any color! Fall in love with this stuff! Also can be used for the *Devore´* technique. 30 yd bolts. See it elsewhere for \$20 - \$40 a yard! Priced per yard.

White 45"

#SVEL

White 55"

#SVEL55

BLACK:

#BSVEL

■ DEVORE SOLID SATIN SCARVES (70% RAYON / 30% SILK CHIFFON)

Shimmer of rayon satin! Used for the *Devore´* technique. Silky, shiny beautiful fabric for "burn-out". Apply Fiber-Etch to remove the rayon threads in a design leaving a lace of the remaining silk threads. Dyes up gorgeously in any color! You can solid color dye or paint these with Procion dye. They emerge with startlingly intense colors!

8" x 54" Solid (no pattern, no fringe):

#DCS8

15" x 60" Solid (no pattern, no fringe):

#DCS15

14" x 72" Solid (no pattern, no fringe):

#DCS14

35" x 35" Solid (no pattern, no fringe):

#DCS35

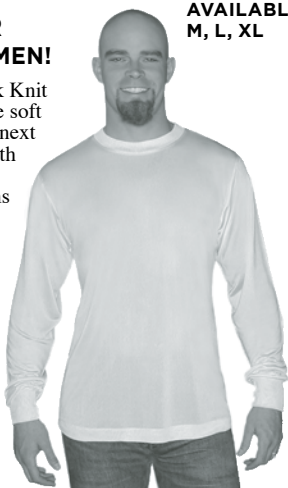


"mm" stands for "momme", NOT millimeters, a Japanese unit of measure for the weight of silk that is also used in China. It sounds like "mummy". One momme = 3.75g of a 25 yd X 1.49 inch strip of silk, or 3.62 grams per sq. yd. The higher the mm, the heavier the silk. Ethereal see-through Gauze is about 3mm, heavy Charmeuse is 19.5mm, average Habotai (China Silk) is 8 or 10mm. Just in case you were wondering!

SILK UNDERWEAR

SILK KNIT UNDERWEAR FOR MEN & WOMEN!

Semi-sheer 100% Silk Knit underwear! This is the soft slinky stuff you wear next to your skin for warmth or layering. Silk knit 100 grams or 75 grams per sq. meter. Sewn with Silk Thread so you can dye them in any color you like without the stitching being a problem. So comfy & soft, like a second, better skin! Great for sleeping in during the winter. Layer them under your regular clothing for added warmth! See our website for garment measurements.



Men's Long sleeve T-Shirt:

#MSUTLS:
(100 grams)



#SUL: (75 grams)
Leggings with Elastic waistband



T-Shirt with trim on neckline and sleeves
#SUTSS:
(100 grams)



Long sleeve T-Shirt with trim on neckline
#SUTLS:
(75 grams)

ALL FIVE STYLES AVAILABLE IN WOMEN'S SIZES: S, M, L, XL



Camisole:
#SUCAM: (100 grams)



Tank Top:
#SUTT: (100 grams)

Camisole
T-Shirt Short Sleeve
T-Shirt Long Sleeve
Tank Top
Leggings
Men's Leggings
Men's Long Sleeve

#SUCAM
#SUTSS
#SUTLS
#SUTT
#SUL
#MSUL
#MSUTLS

SILK PONCHO CREPE DE CHINE 14 MM

This is a lush beautiful garment! Very generously sized at 55" wide, 76" long. Hand rolled hems & hand sewn with silk thread. Worn as a poncho, ruana, sarong, or as a pareo! Incredibly versatile! Beautiful luxurious drape! Express yourself & make a dramatic entrance!



DYE ONE WITH ACID DYES! SCRUNCH DYE IT IN A BUCKET OR TIE-DYE IT WITH DHARMA FIBER REACTIVE DYES!

#SPON



SILK CUT VELVET PONCHO



ABSTRACT BOUQUET LEAF

In 3 Beautiful patterns: Abstract, Bouquet, or Leaf patterns. 45" x 63" with a 4" Fringe. Super elegant cut velvet in a Poncho/Ruana design. Dye it in your choice of colors & see the pattern come to life! Dyeing with cotton or silk dyes creates stunning effects as the silk & rayon take the dye in sometimes different hues! Try dyeing with Alter Ego dyes (pgs. 15 & 44).

#CVP

MEN'S SILK HANDKERCHIEFS 17" X 17" WHITE 10MM SILK TWILL OR 12MM SILK SATIN.

These classic men's handkerchiefs have hand rolled hems that have been handstitched with silk thread. Ready for painting or dyeing. See them in N.Y.C. for over \$50!



SATIN:
#SS17

TWILL:
#ST17

LADIES SILK HANDKERCHIEFS

11" X 11" WHITE 8MM HABOTAI
Hand-rolled hems that have been handstitched with silk thread. Ready for painting or dyeing. Also perfect for silk painting classes or parties with kids. Great for handmade little gifts for mom! Sold & priced in Packs of 12. Less than .99¢ ea!



#SH

SILK CLOTHING BLANKS

SILK TANK TOPS

16.5MM CHARMEUSE

OPEN OR CLOSED SEAMS

Very luxurious tank top. Soft, drapery & oh so good on the skin. Bias cut. Sized & designed to fit properly. Open seams for painting, closed for just dyeing. Shown with our Silk Boxer Shorts (right). Versatile tank works for evening wear or with your favorite jeans.



Women's sizes: S, M, L, XL

#STTC

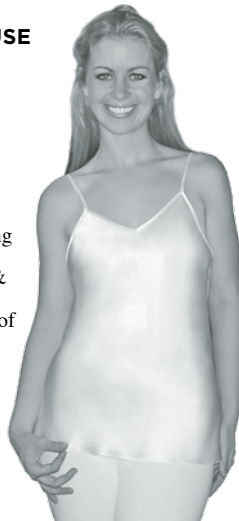
SILK CAMISOLES

16.5MM CHARMEUSE

Pamper yourself with smooth buttery satin! Camisole has a bias cut, adjustable straps & a more flattering stretchy fit! Silk thread, & a bias rolled edge instead of facing. Made in a heavier, richer 16.5mm Charmeuse!

4 SIZES:
S: 34"
M: 36"
L: 40"
XL: 42" (at the bust)

#SCAM

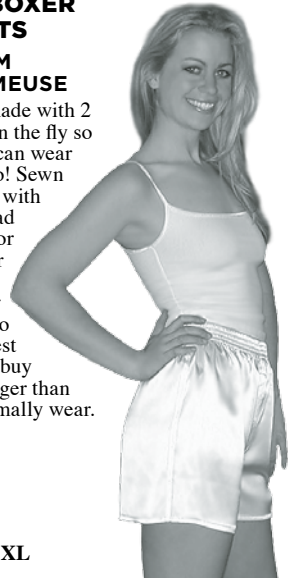


NEW!
HEAVIER
BUTTERY
SILK!

SILK BOXER SHORTS

16.5 MM CHARMEUSE

Nicely made with 2 buttons in the fly so the gals can wear them, too! Sewn in China with silk thread - great for dyeing or painting. Sized for women so we suggest the guys buy a size larger than they normally wear.



S, M, L, XL

#SBSH

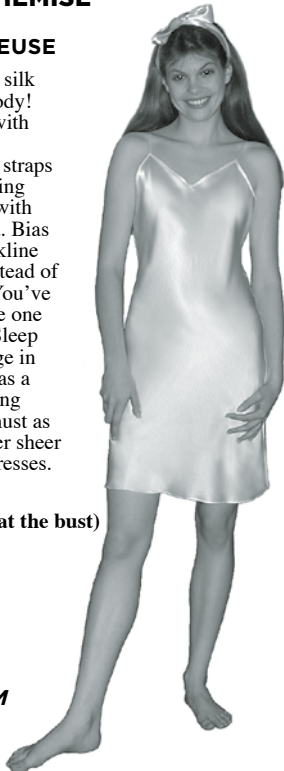
SILK CHEMISE

16.5 MM CHARMEUSE

Luxurious silk on your body! Chemise with a bias cut, adjustable straps & a flattering fit! Sewn with silk thread. Bias rolled neckline edging instead of a facing. You've got to have one of these! Sleep in it, lounge in it, wear it as a racy evening dress! A must as a slip under sheer summer dresses.

4 SIZES:
S: 34" (at the bust)
M: 36"
L: 38"
XL: 40"

#SCHEM



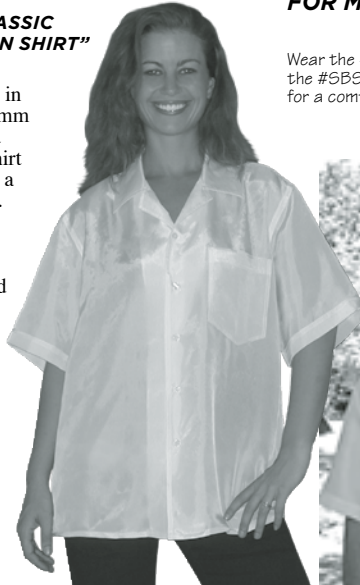
SILK ISLAND SHIRT

LIKE A CLASSIC "HAWAIIAN SHIRT"

Made for us in China in 10mm Habotai in a Hawaiian shirt pattern with a better collar. Expertly tailored, correctly proportioned & sized. Sewn with silk thread. **This is one killer, fantastic silk shirt at a great price!** Cut big - buy the size you normally wear. Women can wear them, too! Also a great option for maternity wear.

4 Men's Sizes: M, L, XL, 2XL
 (not available in size small)

#SIS



FOR MEN OR WOMEN!

Wear the #SIS shirt with the #SBSH Boxer Shorts for a comfy lounge set!



It's natural for silk to have irregularities. It's the nature of silk fabric. They are expected and not considered defects.



"mm" stands for "momme", NOT milimeter, and is a Japanese unit of measure for the weight of silk that is also used in China. It sounds like "mummy". One momme = 3.75g of a 25 yd X 1.49 inch strip of silk, or 3.62 grams per sq. yd. The higher the mm, the heavier the silk. Ethereal see-through Gauze is about 3mm, heavy Charmeuse is 19.5mm, average Habotai (China Silk) is 8 or 10mm. Just in case you were wondering!